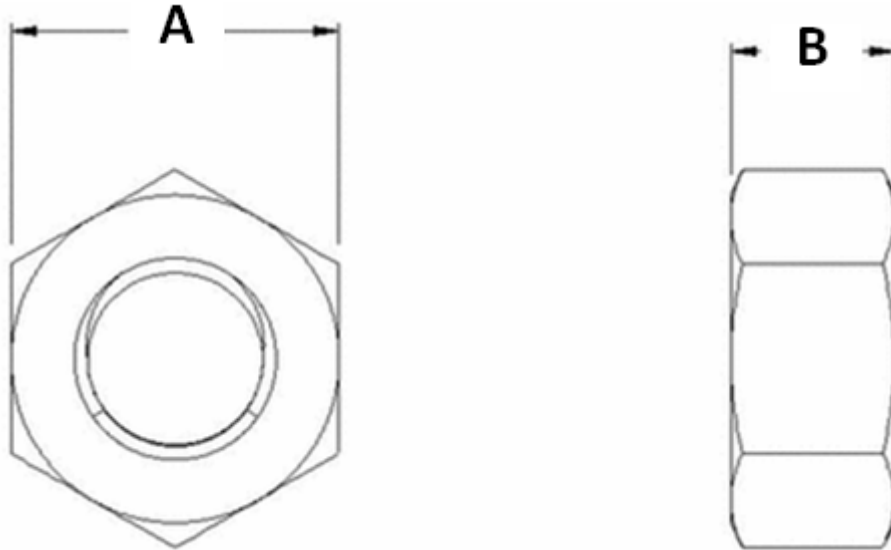


METBLUE FINISHED FULL HEX NUT, CL.10



PART NUMBER	THREAD SIZE	THREAD DIRECTION	A	B
			WIDTH	HEIGHT
UST182798	M6 – 1	Right Hand	10	5
UST181929	M8 – 1.25	Right Hand	13	6.5
UST182708	M10 – 1.50	Right Hand	17	8
UST182800	M12 – 1.75	Right Hand	19	10
UST182801	M14 – 2	Right Hand	22	11
UST182802	M16 – 2	Right Hand	24	13
UST182804	M20 – 2.50	Right Hand	30	16
UST182806	M24 – 3	Right Hand	36	19
UST182808	M30 – 3.5	Right Hand	46	24
UST182810	M36 – 4	Right Hand	55	29